

HR-706 MONITORING SOFTWARE

SWM-HR001E

INSTRUCTION MANUAL

CONTENTS

About this manual	2
Notice when using SWM-HR001E	2
About the CD-ROM	2
1. Before starting the SWM-HR001E	
1.1 Operating environment	3
1.2 Installing the SWM-HR001E	7
1.3 Uninstalling the SWM-HR001E	17
2. Starting and shutting down the SWM-HR001E	
2.1 Wiring between a PC and HR-706	19
2.2 Starting the SWM-HR001E	20
2.3 Displays and operation of the SWM-HR001E	
2.3.1 Monitoring display	21
2.4. Menu bar operation	
2.4.1 Logging file name setting	23
2.4.2 Printer selection	23
2.4.3 Printing	24
2.4.4 Terminating the SWM-HR001E	24
2.4.5 Channel name registration	25
2.4.6 Communication setting	26
2.4.7 Instrument number setting	27
2.4.8 Help display	27
2.4.9 Version information display	28

Shinko

About this manual

This manual explains how to install SWM-HR001E monitoring software (for the HR-706).

In this manual, Windows XP is used for the purpose of explanation, however, other operating systems (Windows 98/Me/NT4.0/2000/VISTA/7) are applicable as well.

Notice when using SWM-HR001E

Shinko software: Terms of Use

1. License

(1) This software can only be used upon accepting the Terms of Use.

Please read carefully these Terms of Use before using this software.

(2) You may not reverse engineer, decompile or disassemble the software.

2. Copyright

The copyright for this software belongs to Shinko Technos Co., Ltd.

3. Limitation of usage

You may not rent, lease or lend this software.

4. Copy of the software

It is against the law to copy this software onto any medium.

5. Disclaimers

(1) Shinko Technos Co., Ltd makes no warranty regarding the use of this software.

Shinko Technos Co., Ltd is not liable for any problems occurring from the use of this software.

(2) Shinko Technos Co., Ltd is not liable for any damages, whether direct, indirect, special, incidental, or consequential (including loss of business profits, business interruption, or any other pecuniary loss), as a result of using this software, even when Shinko Technos Co., Ltd has been informed of the possibility of the damage.

About the CD-ROM

- In the CD-ROM, the following files are included.

The information on installing the SWM-HR001E monitoring software is contained in the following file.

Install_E.txt/Install_J.txt

The information on the usage license and copyright of SWM-HR001E monitoring software is contained in the following file.

Readme_E.txt/Readme_J.txt

The following is the installation file of SWM-HR001E monitoring software.

Use this file for Windows 2000/XP.

SWM-HR001E_Vxxx.msi (in the Windows2000_XP folder)

The following is the installation file of SWM-HR001E monitoring software.

Use this file for Windows 98/Me/NT4.0 or if installation is impossible with the above "SWM-HR001E_Vxxx.msi".

setup.exe (in the Windows98_Me folder)

- Windows 98/Me/NT4.0/2000/XP/VISTA/7 are registered trademarks of the Microsoft Corporation.

1. Before starting the SWM-HR001E

1.1 Operating environment

HR-706 monitoring software "SWM-HR001E" will run with the following system requirements.

• Personal computer

Personal computer which is running Windows 98/Me/NT4.0/2000/XP/VISTA/7

- RS-232C interface equipped (COM1 to COM8)
- CPU : Intel Pentium3 800MHz or more
- Main memory: Windows 98/Me/NT4.0 (128MByte or more)
Windows 2000 (256MByte or more)
Windows XP (512MByte or more)
Windows VISTA/7 (2GByte or more)
- Hard disk : 10 Megabytes or more of space available
- CD-ROM drive equipped

• Operating system

Windows 98 (English)
Windows Me (English)
Windows NT4.0 (English)
Windows 2000 Professional (English)
Windows XP Home Edition (English)
Windows XP Professional (English)
Windows VISTA (English)
Windows 7 (English)

• Display

CRT size: 1024 x 768 dots or more, 256 colors or more

Use "Normal fonts".

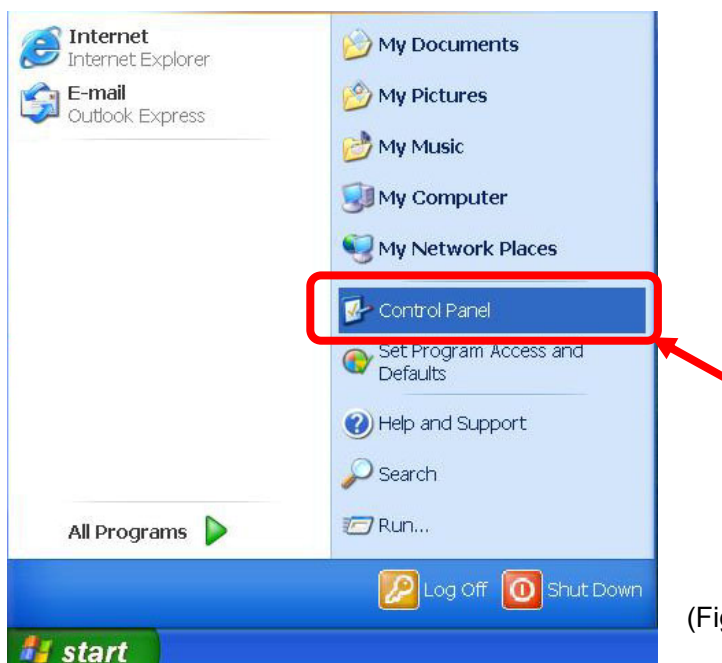
To set up the font, refer to pages 3 to 6.

● How to set up the font size

To change the font from large to normal, follow the procedures below.

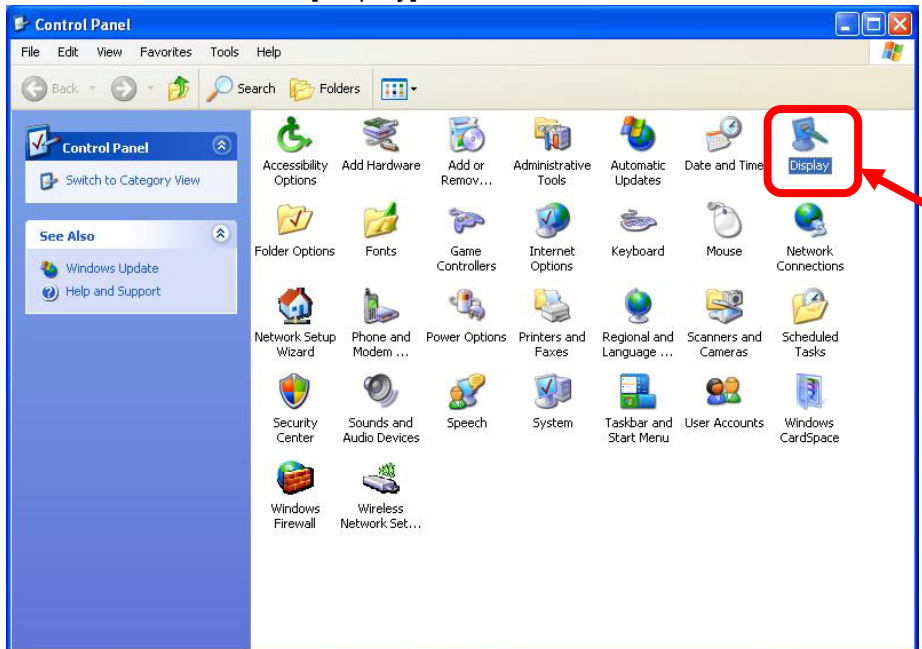
(1) Close all running applications.

Select [All Programs] – [Control Panel], and click.



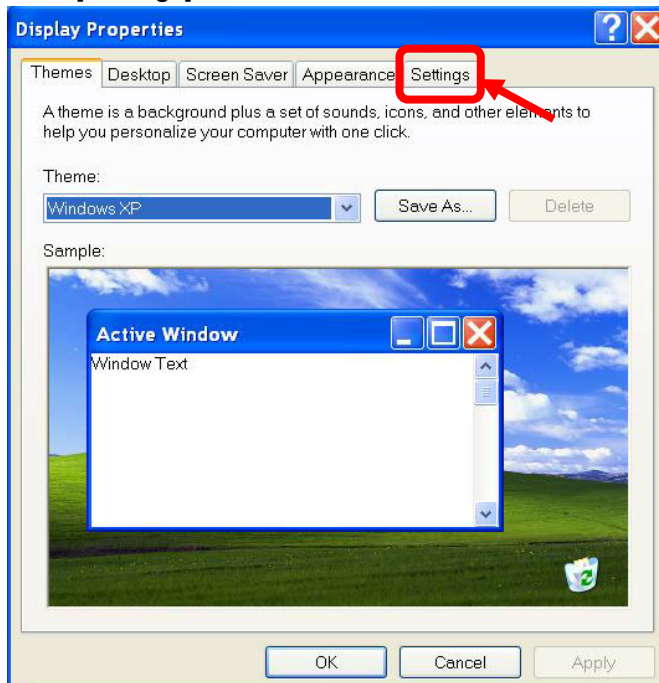
(Fig. 1.1-1)

(2) Double click on the icon [Display].



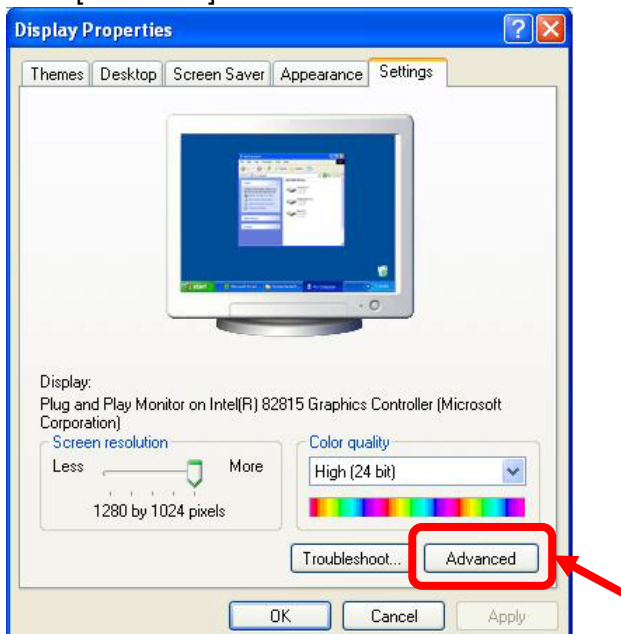
(Fig. 1.1-2)

(3) Click [Settings].



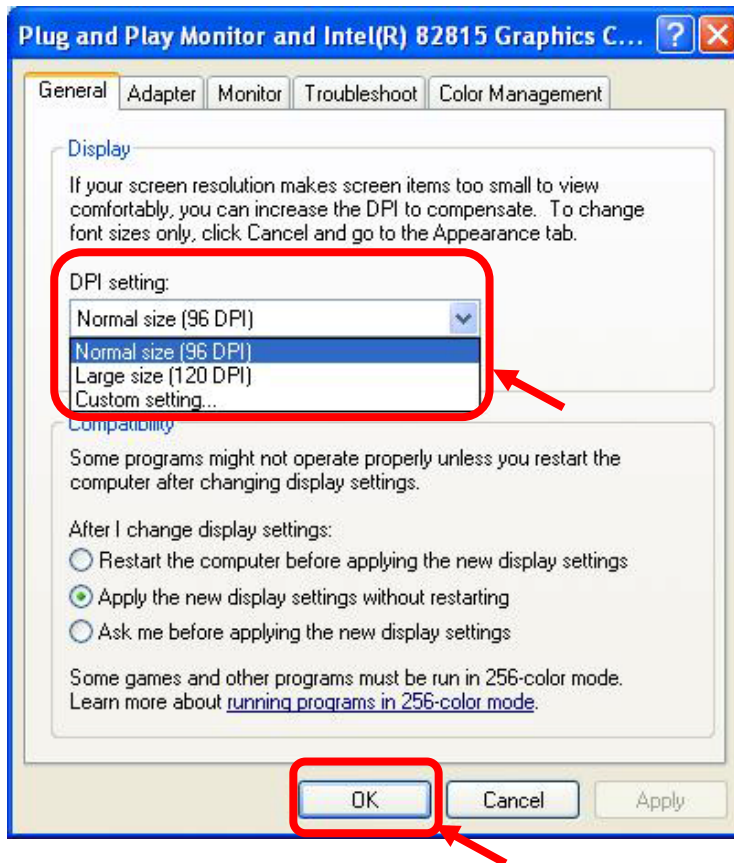
(Fig. 1.1-3)

(4) Click [Advanced].



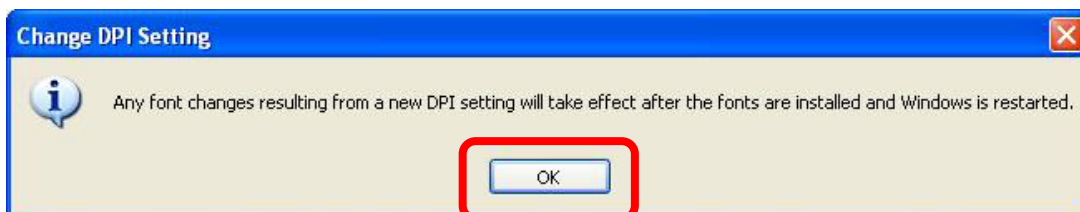
(Fig. 1.1-4)

(5) Select “Normal size (96 DPI)” and click [OK].



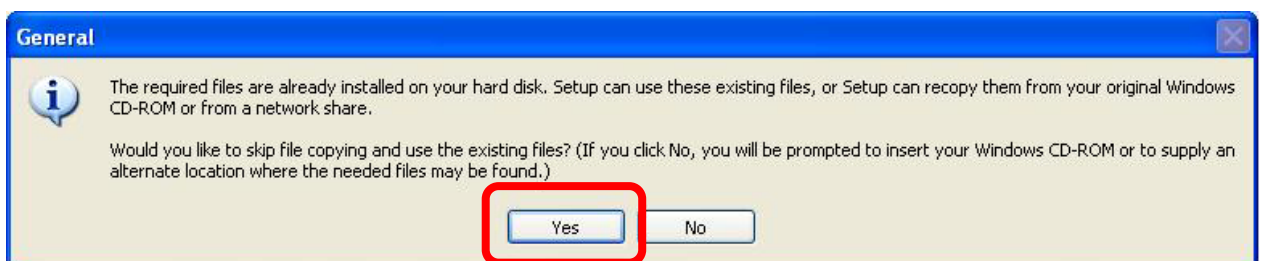
(Fig. 1.1-5)

(6) Click [OK].



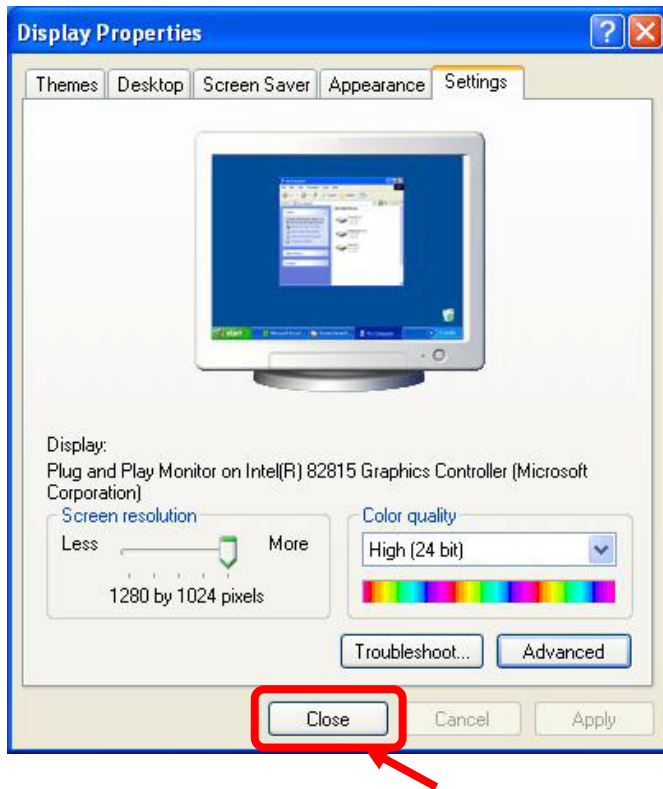
(Fig. 1.1-6)

(7) Click [Yes].



(Fig. 1.1-7)

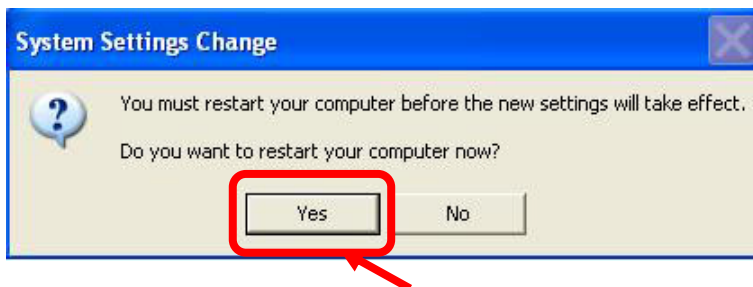
(8) Click [Close].



(Fig. 1.1-8)

(9) Click [Yes].

After restarting the system, the font will be set to “Normal size”.



(Fig. 1.1-9)

1.2 Installing the SWM-HR001E



Notice

- If an older version of this software has already been installed, uninstall (delete) it, and install the new SWM-HR001E.
To delete the old software, follow the instructions after clicking [Control panel] - [Add or Remove Programs].
See pages 17, 18.
- Close all running applications/software.
- To install the software on Windows NT4.0/2000/XP/VISTA/7, access rights are required.
Log on as an Administrator.
- Do not copy the installation file to addresses such as the desktop in which Japanese fonts are used.

The subsequent setup of the SWM-HR001E assumes that the installation file has been successfully downloaded and decompressed into the **C: Download** folder.

The PC used here has the following drive configuration.

Designate a drive in accordance with your operating environment.

A drive : Floppy disk

C drive : Hard disk

D drive : CD-ROM

In the downloaded folder, 2 installation files are included as shown below.

- **SWM-HR001E_Vxxx.msi (in Windows2000_XP folder)**

For Windows 2000/XP/VISTA/7, use this file.

For installation, see pages 8 to 13.

- **setup.exe (in Windows98_Me folder)**

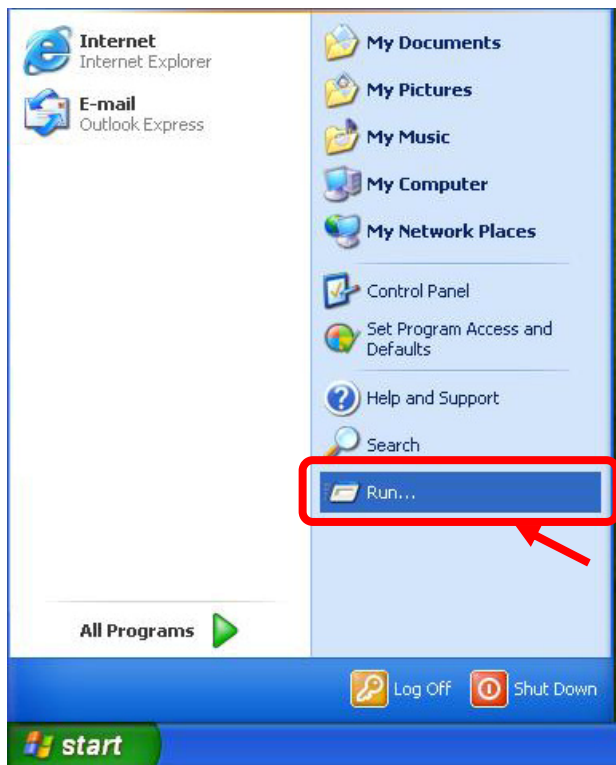
For Windows 98/Me/NT4.0, use this file.

This file is also used when it is impossible to install SWM- HR001E with the above file **SWM-HR001E_Vxxx.msi**.

For installation, see pages 14 to 16.

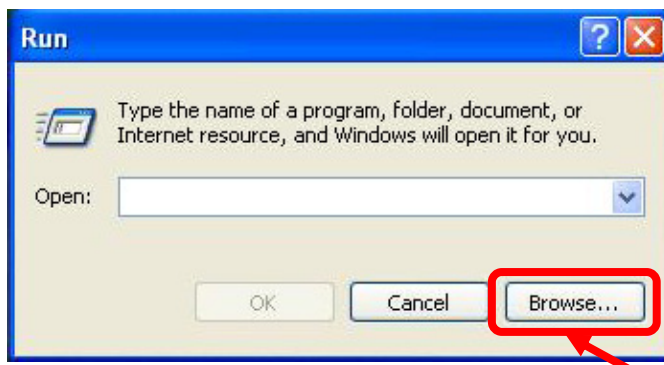
When the computer is running Windows 2000/XP/VISTA/7

(1) Select [All Programs] - [Run...], and click.



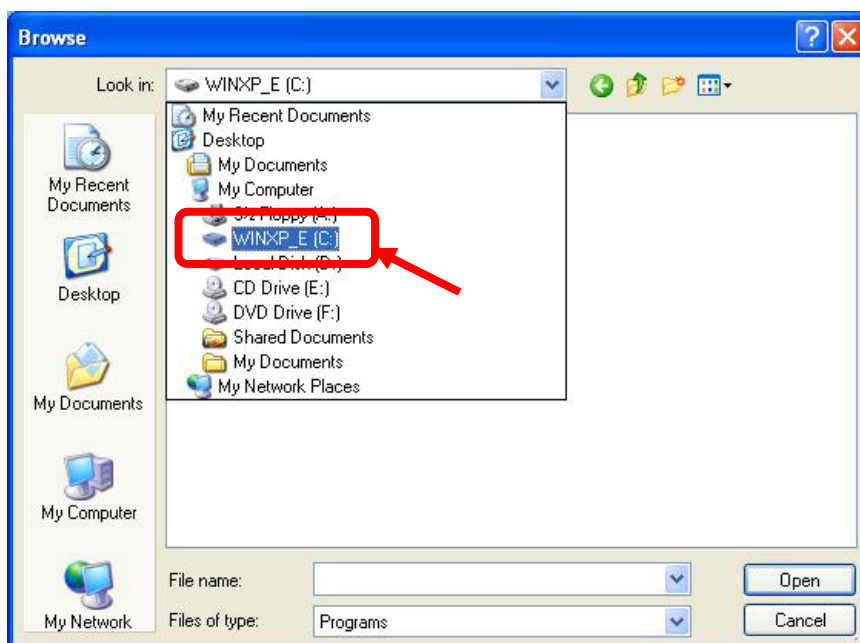
(Fig. 1.2-1)

(2) Click [Browse...].



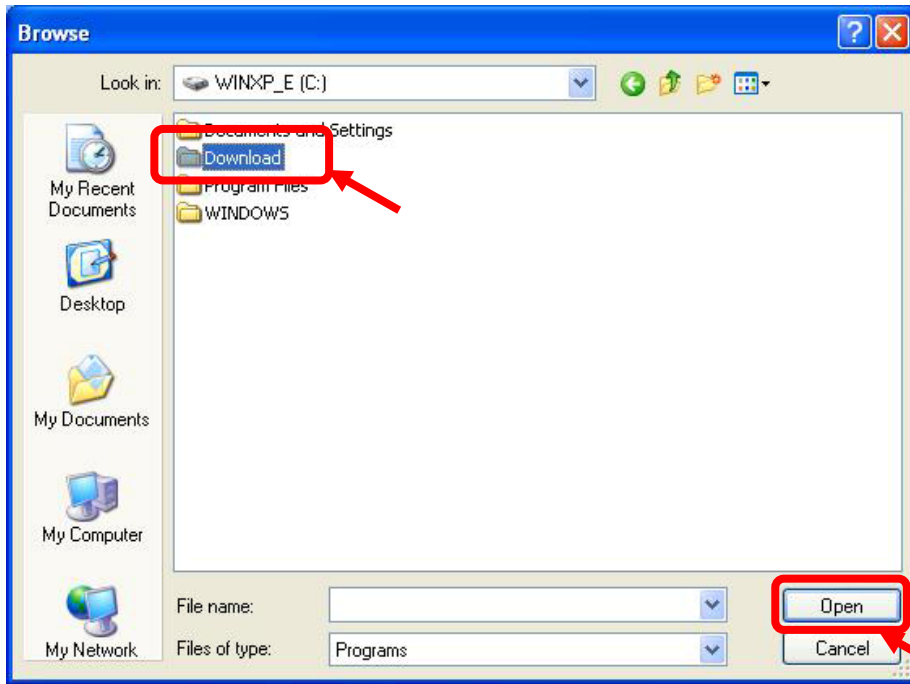
(Fig. 1.2-2)

(3) Select "WINXP_E (C)".



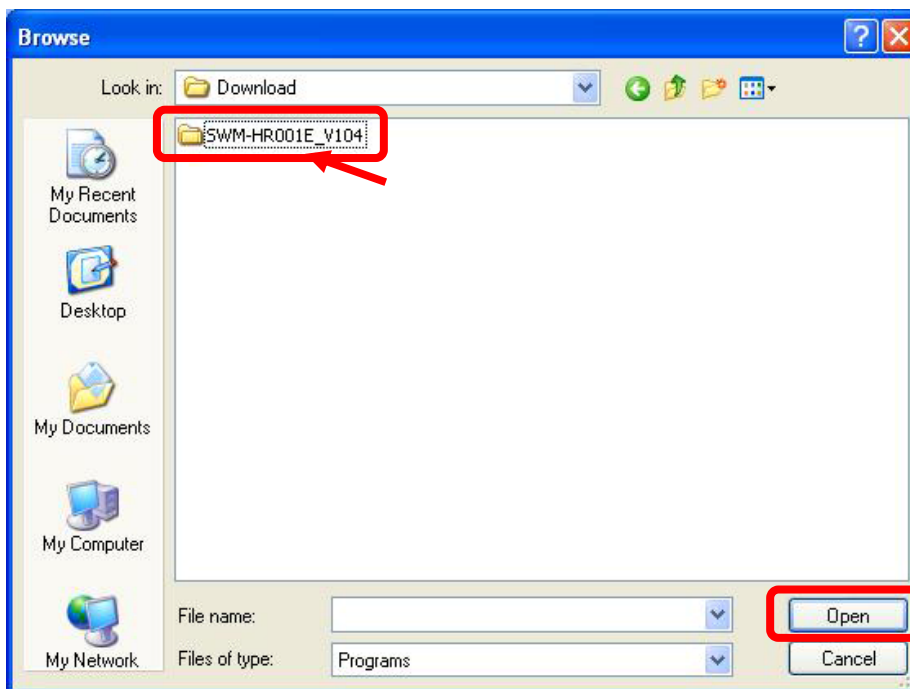
(Fig. 1.2-3)

(4) Select [Download], and click [Open].



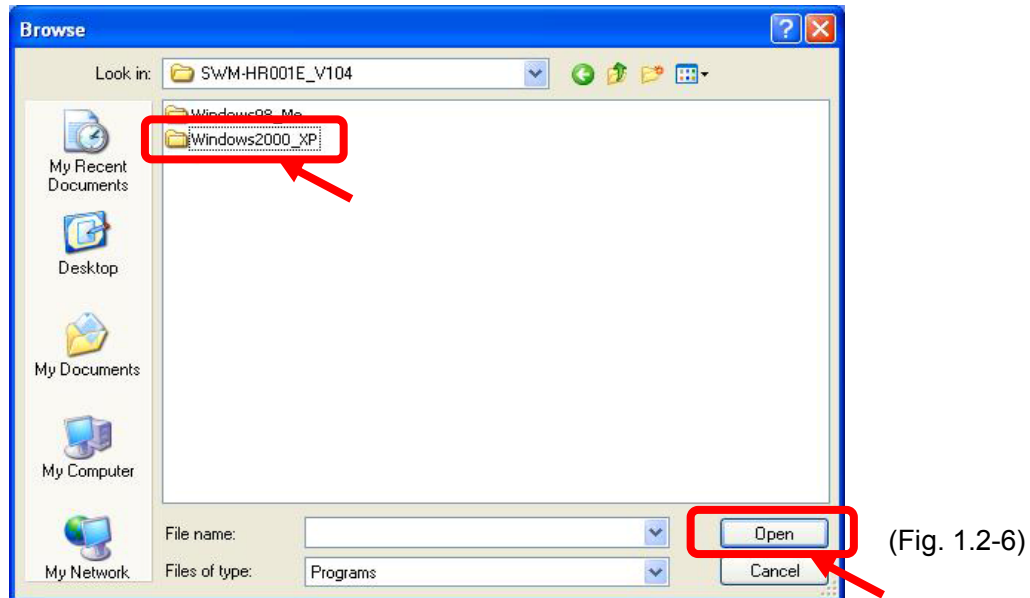
(Fig. 1.2-4)

(5) Select [SWM-HR001E_Vxxx] folder, and click [Open].

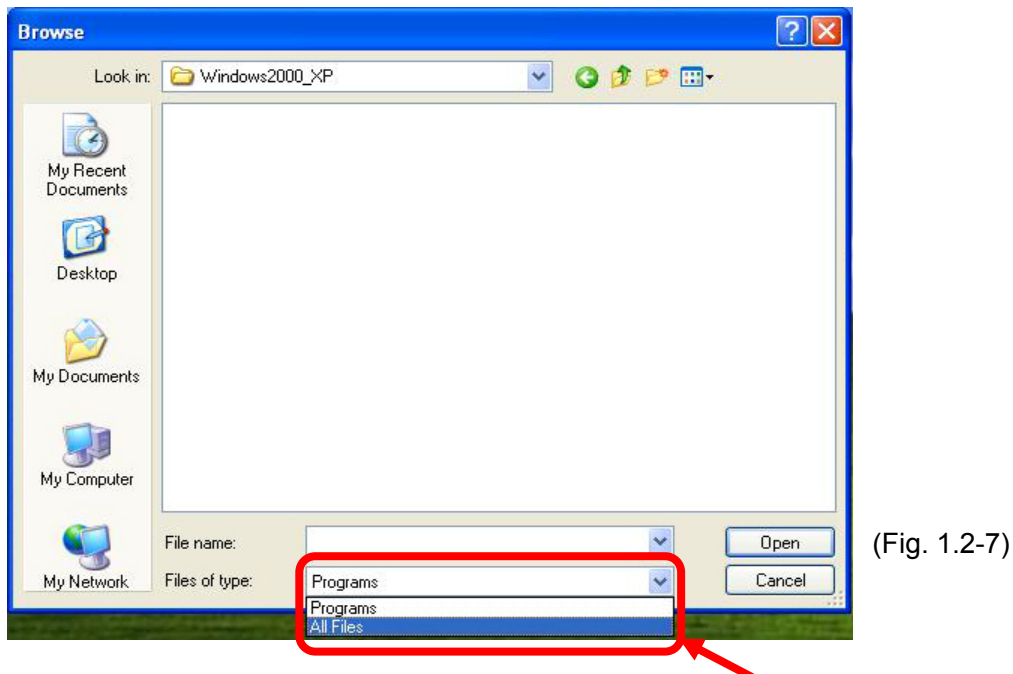


(Fig. 1.2-5)

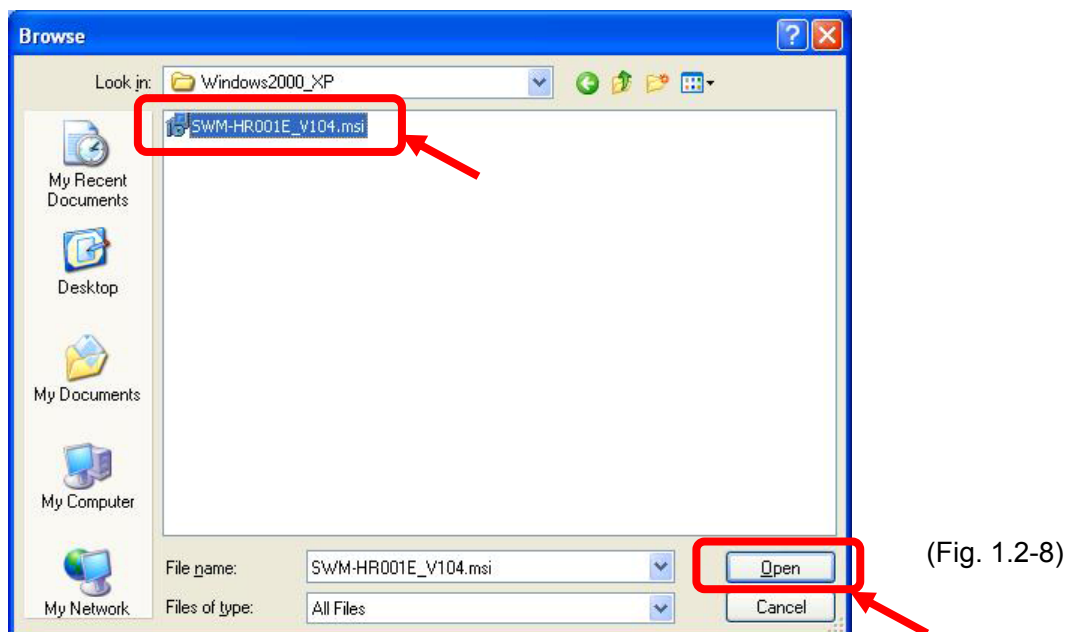
(6) Select [Windows2000_XP] folder, and click [Open].



(7) Select [All Files] from the Files of type.

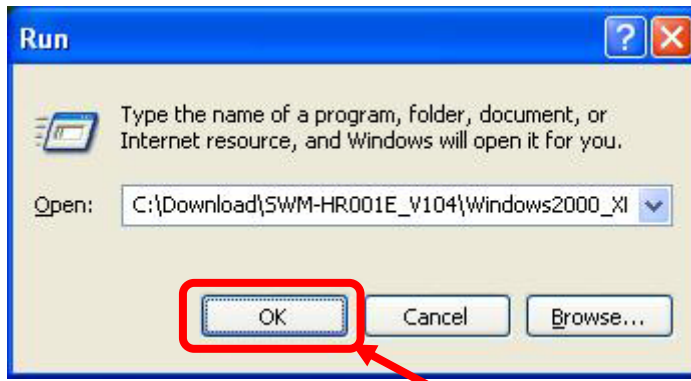


(8) Select [SWM-HR001E_Vxxx.msi] and click [Open].



(9) Click [OK].

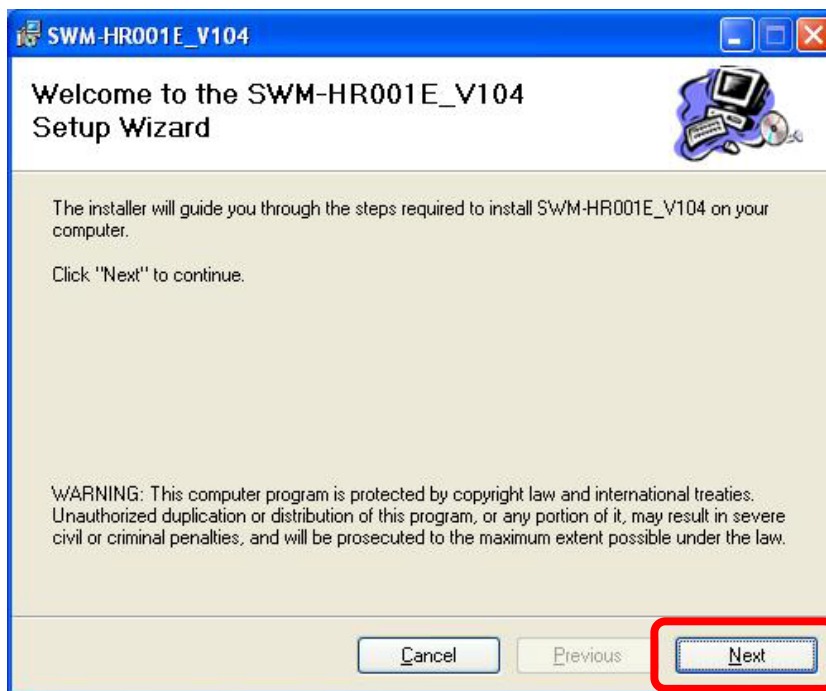
[SWM-HR001E_Vxxx] setup wizard will appear.



(Fig. 1.2-9)

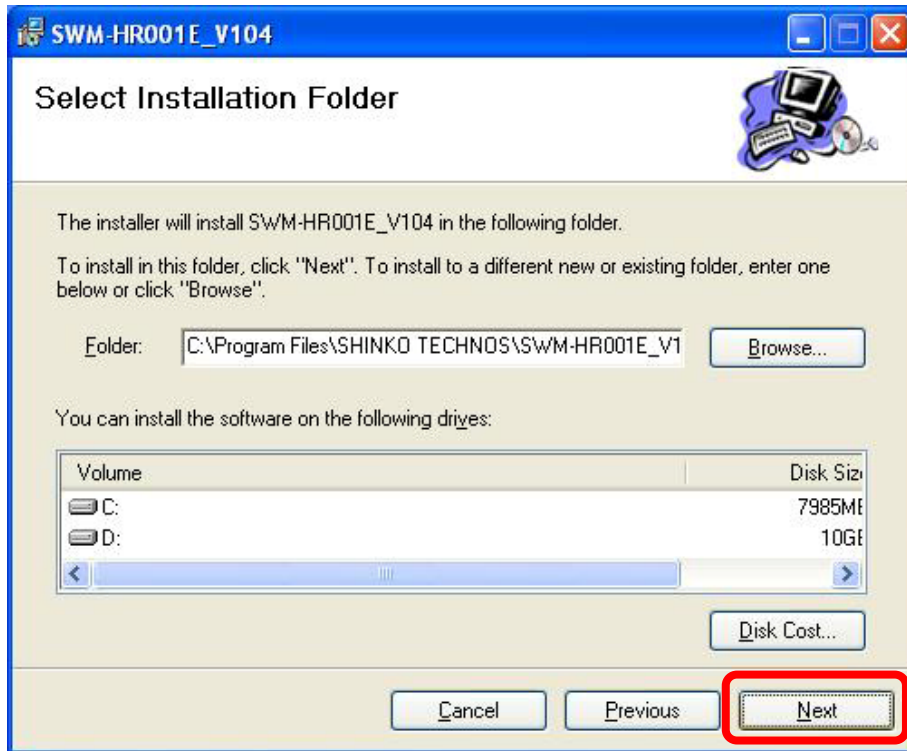
(10) Click [Next].

To cancel installation, click [Cancel].



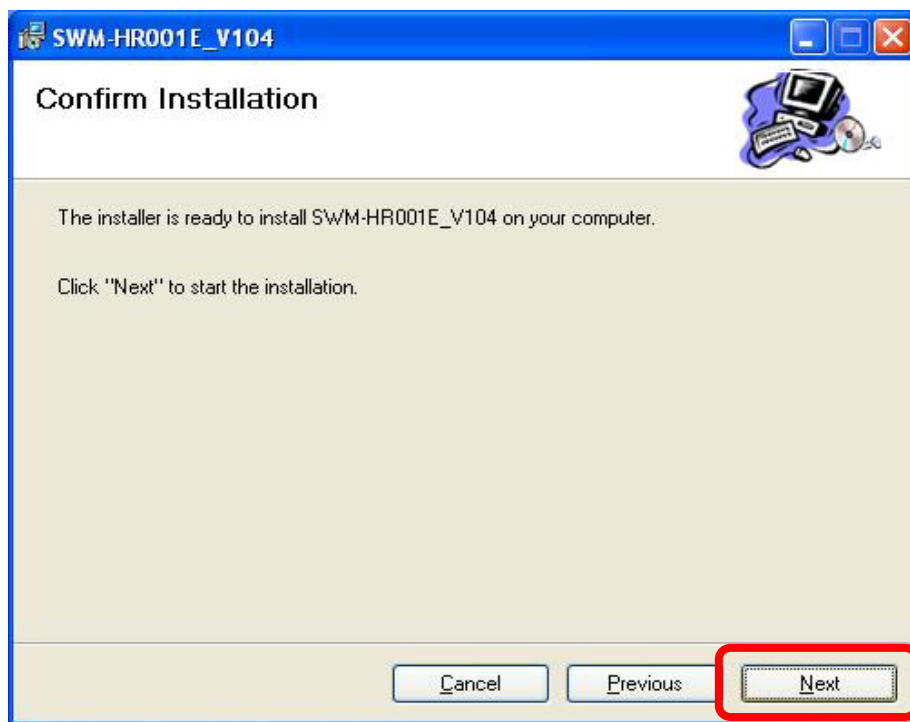
(Fig. 1.2-10)

- (11) Confirm the name of the drive and folder (directory) for its installation destination.
“C:\Program Files\SHINKO TECHNOS\SWM-HR001E_Vxxx \” has been already designated for installation as default.
If this designation is OK, click [Next].
To cancel the installation, click [Cancel].
To return to the previous screen, click [Previous].
To change the installation destination, click [Browse...].
To confirm amount of space, click [Disk Cost...].



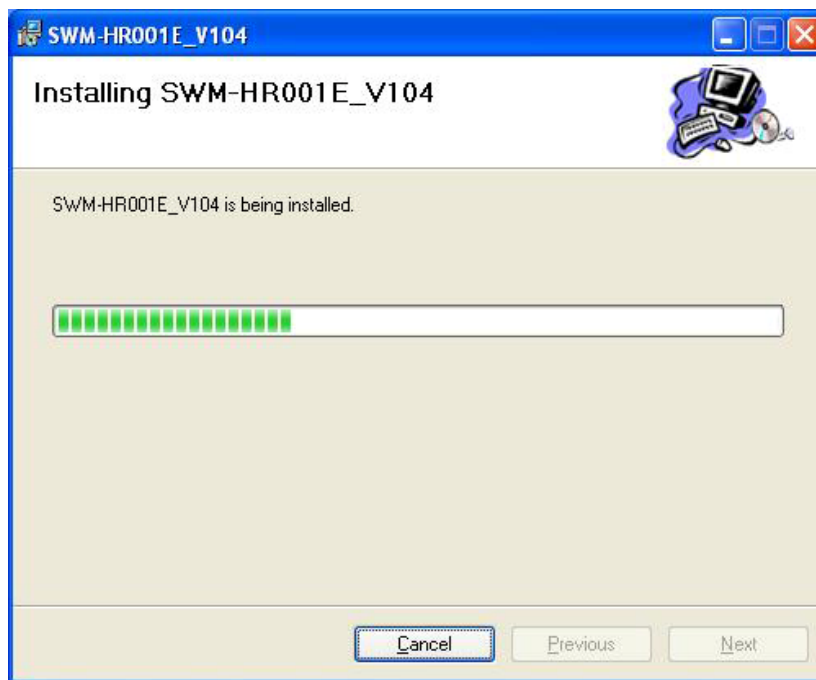
(Fig. 1.2-11)

- (12) Installation confirmation screen appears. Click [Next].
To cancel installation, click [Cancel].
To revert to the previous screen, click [Previous].



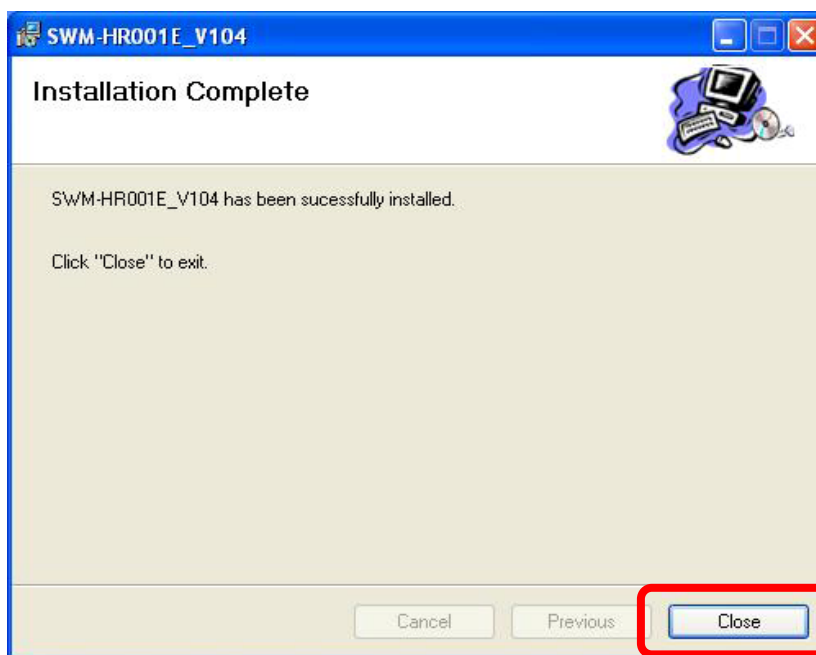
(Fig. 1.2-12)

- (13) The file copying status will be indicated with a bar graph.
To cancel installation, click [Cancel].



(Fig. 1.2-13)

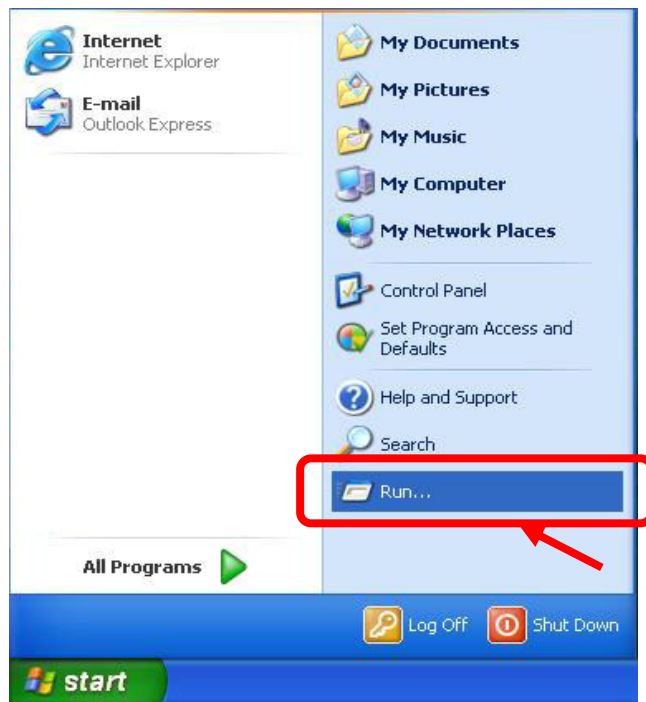
- (14) When installation is complete, the following display will appear. Click [Close].



(Fig. 1.2-14)

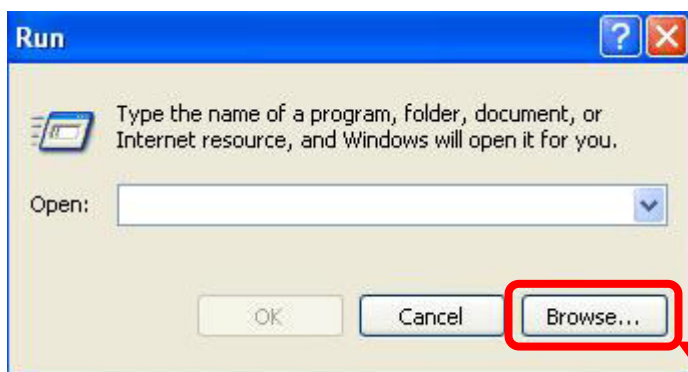
When the computer is running Windows 98/Me/NT4.0

(1) Select [Run...] and click on it.



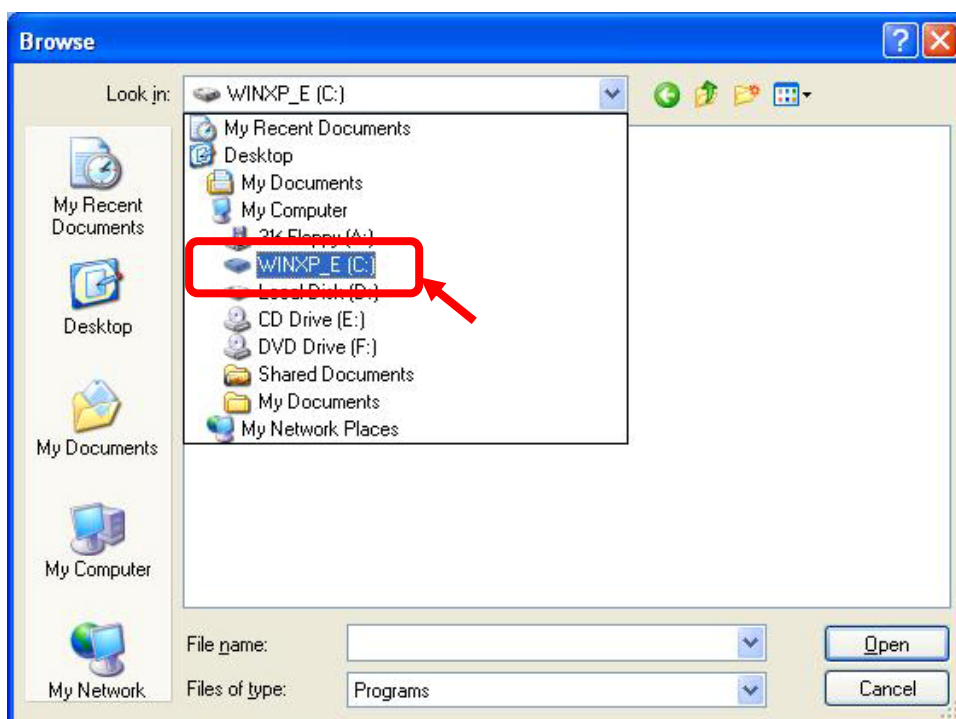
(Fig. 1.2-15)

(2) Click [Browse...].



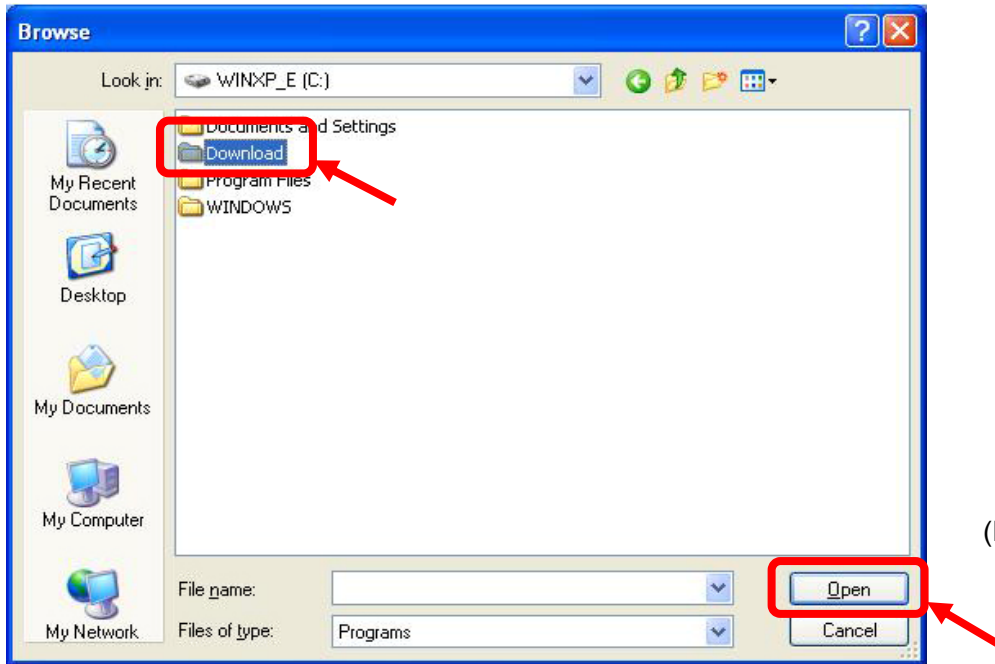
(Fig. 1.2-16)

(3) Select "WINXP_E (C)".



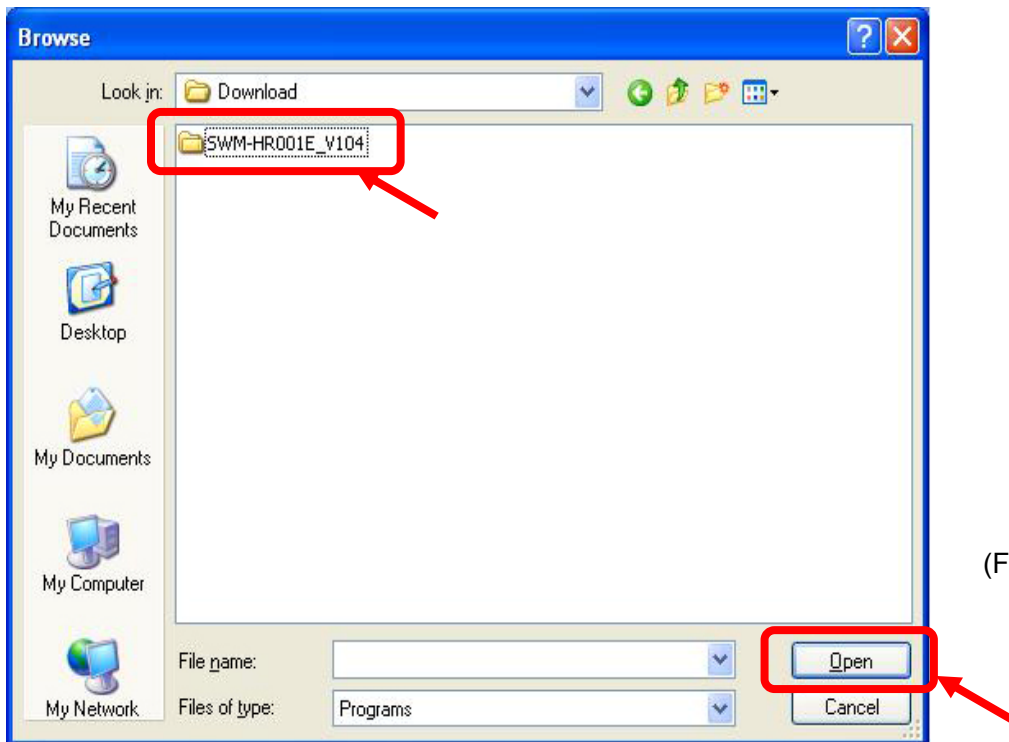
(Fig. 1.2-17)

(4) Select [Download], and click [Open].



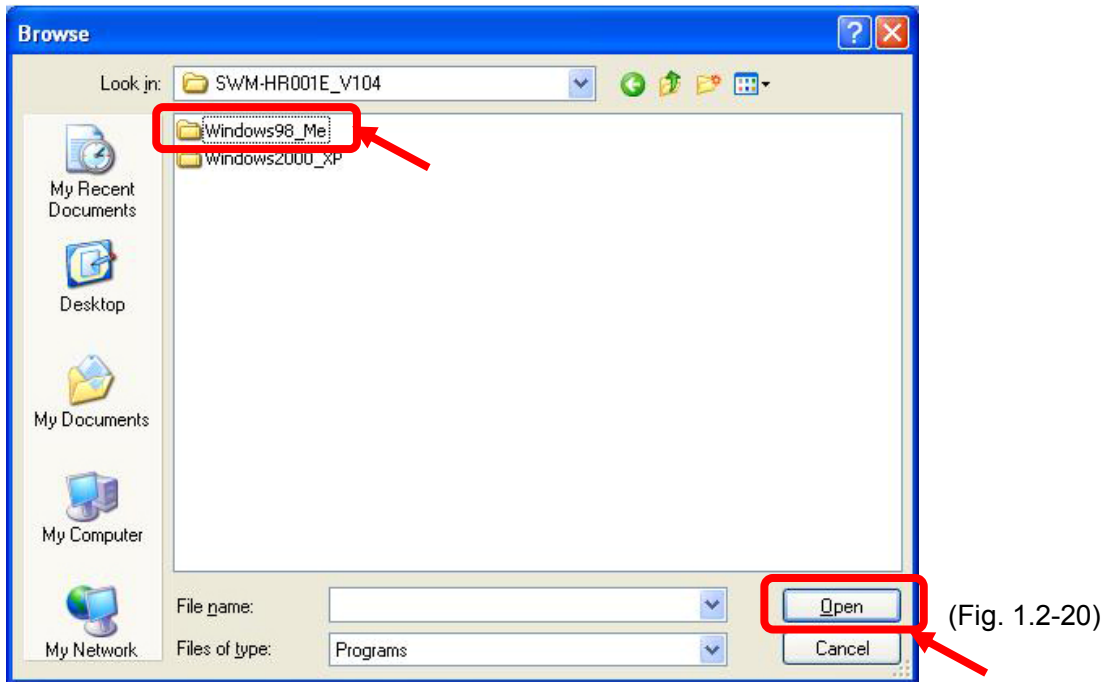
(Fig. 1.2-18)

(5) Select [SWM-HR001E_Vxxx] folder, and click [Open].

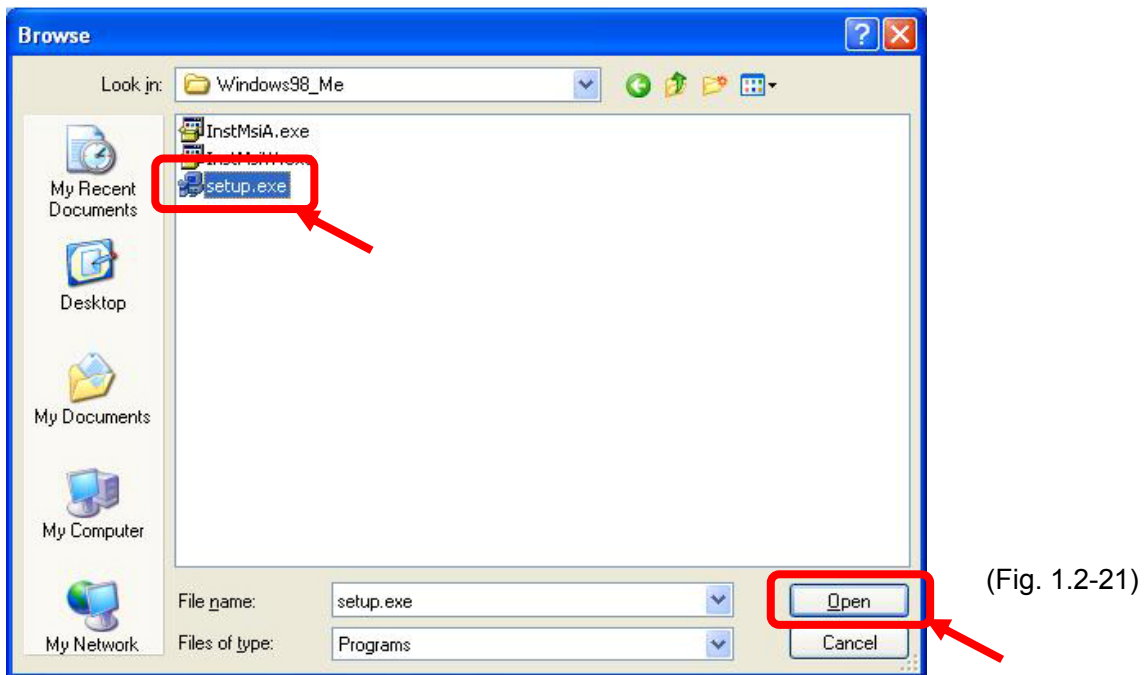


(Fig. 1.2-19)

(6) Select [Windows98_Me] folder, and click [Open].

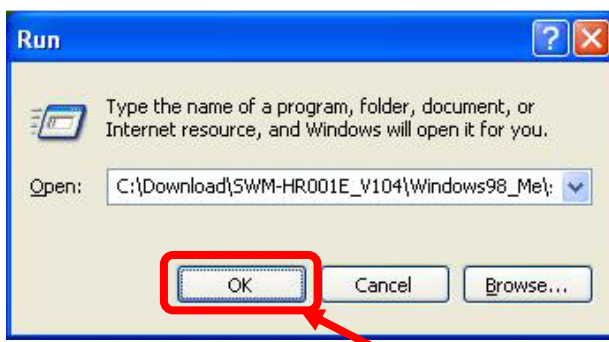


(7) Select [setup.exe], and click [Open].



(8) Click [OK].

[SWM-HR001E_Vxxx] setup wizard appears.

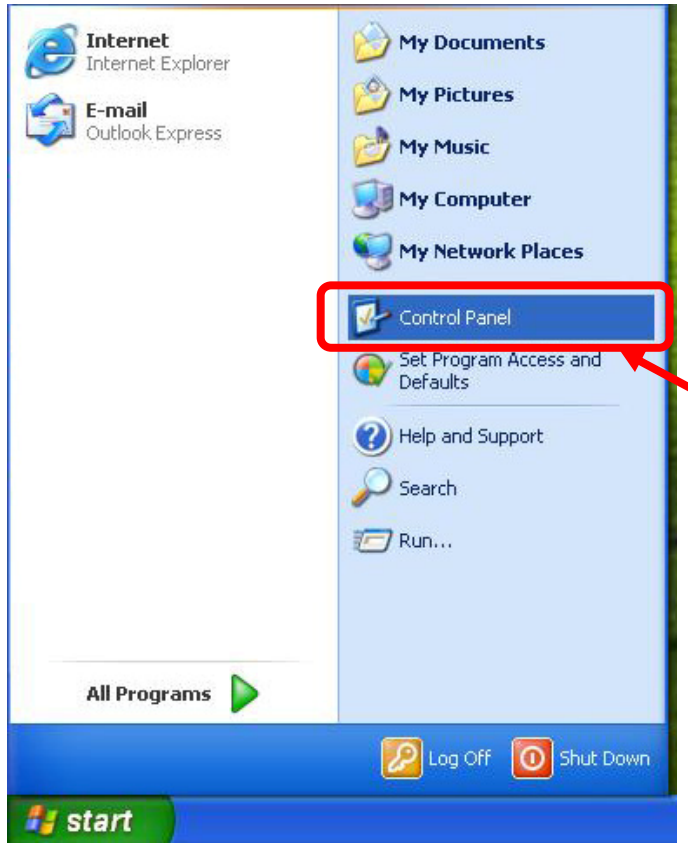


(9) Installation method hereafter is the same as that of Windows 2000/XP/VISTA/7.
Install the software, referring to steps from (10) to (14) of Windows 2000/XP/VISTA/7.
(See pages 11 to 13.)

1.3 Uninstalling the SWM-HR001E

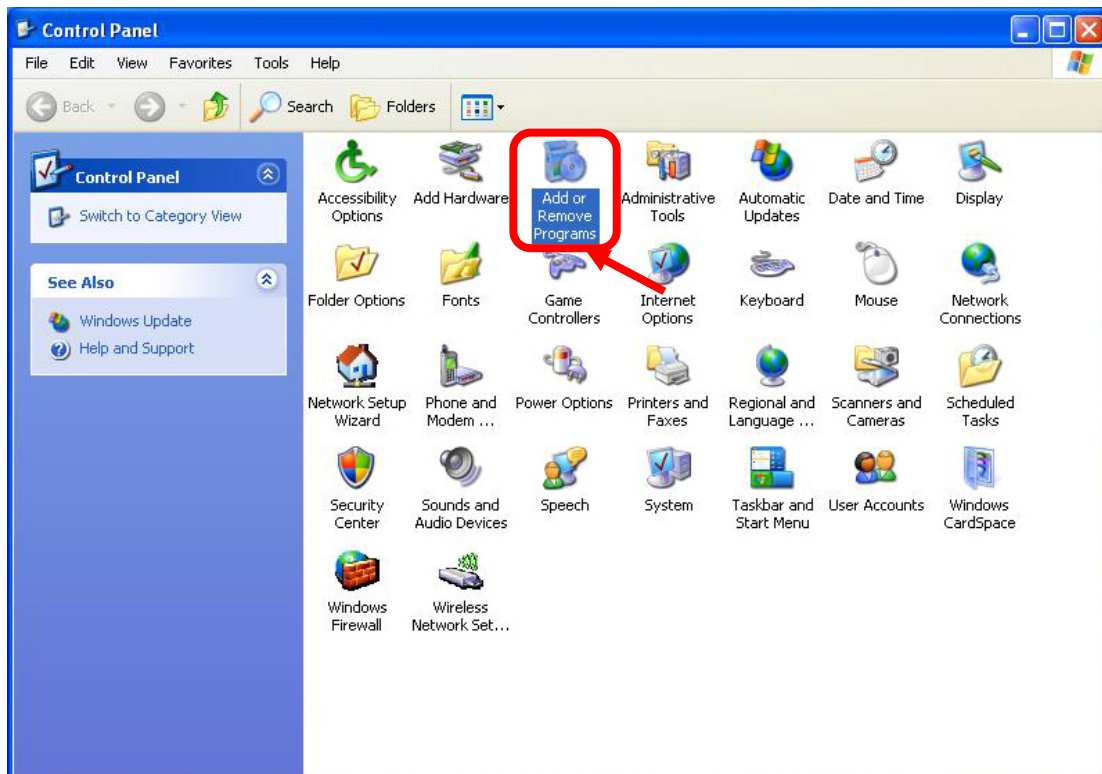
The procedures to uninstall the related files of the SWM-HR001E from the hard disk are described as follows.

(1) Select [All Programs] – [Control Panel], and click.



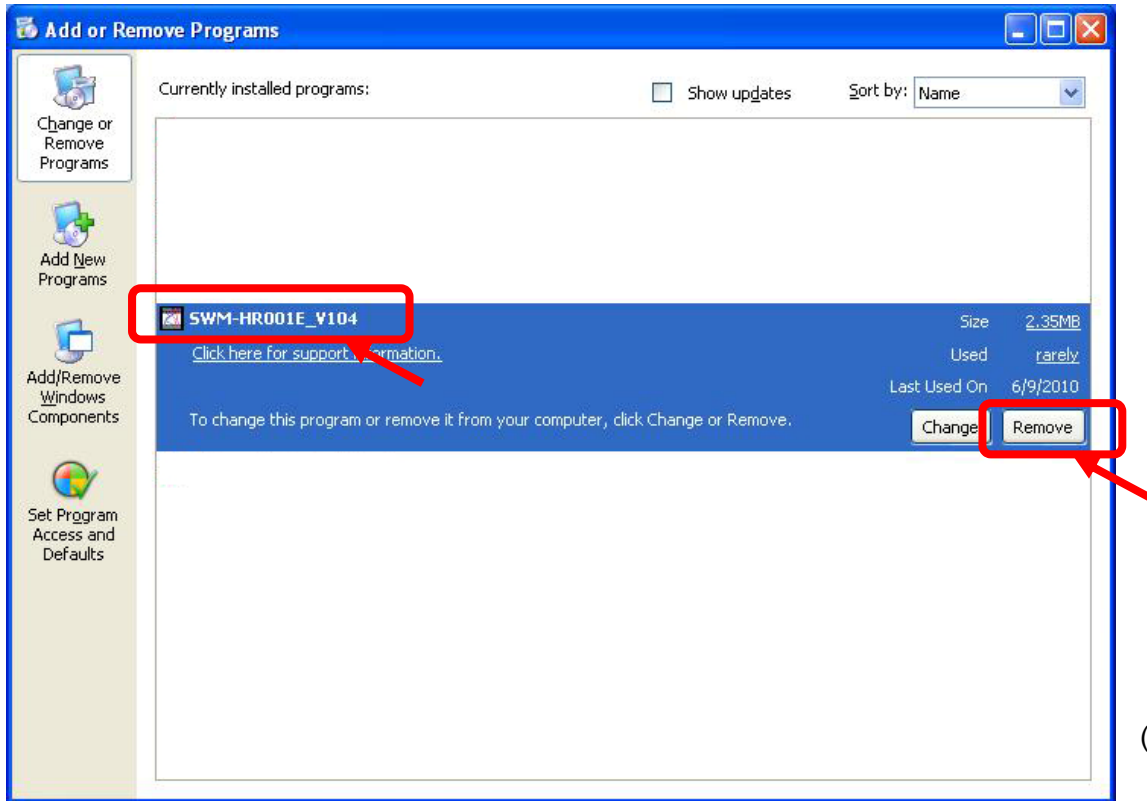
(Fig. 1.3-1)

(2) Double-click on the icon [Add or Remove Programs].



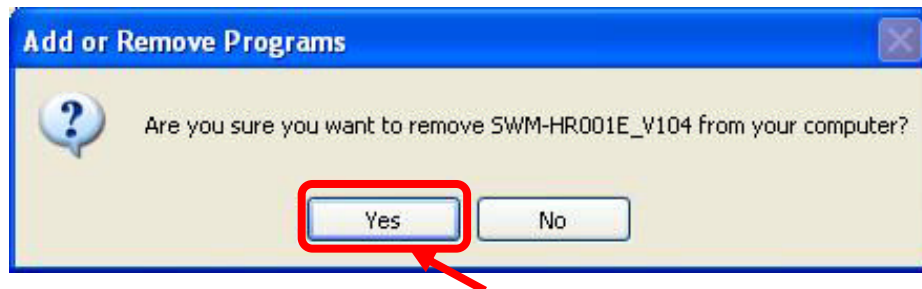
(Fig. 1.3-2)

(3) Click or select “SWM-HR001E_Vxxx” in the application list, and click [Remove].



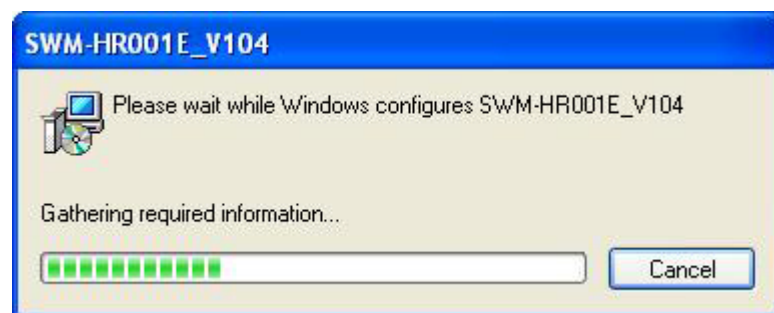
(Fig. 1.3-3)

(4) The dialog box to confirm removal will appear.
Click [Yes].



(Fig. 1.3-4)

(5) The file un-installation status will be indicated with a bar graph.
To cancel uninstalling the software, click [Cancel].



(Fig. 1.3-5)

(6) Confirm that “SWM-HR001E_Vxxx” has been removed from the application list.

2. Starting and shutting down the SWM-HR001E

2.1 Wiring between a PC and HR-706



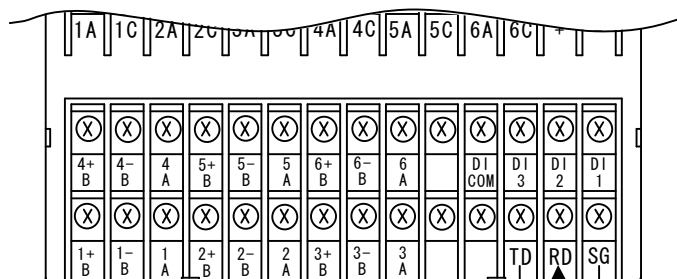
Notice

Before starting the Monitoring software, check and set the following, referring to “7.2.7 Setting the Communication Function” in the Instruction Manual for the HR-706.

- Local Address: When connecting plural units, set an individual instrument number for each unit.
- Communication speed: Set the communication speed in accordance with the PC and communication converter. (9600bps is recommended.)
- Data Length : 7 bits
- Parity Bit : Even parity
- Stop Bit : 1 bit

● Wiring example

RS-232C Wiring



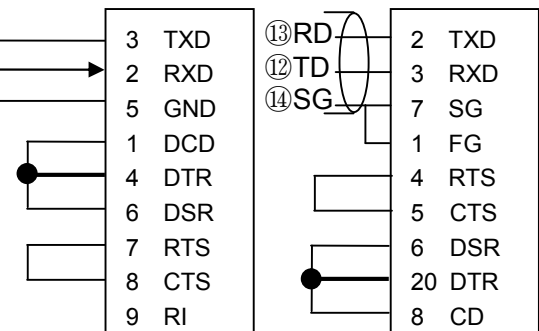
[Note]

Cable length is a maximum of 15m.

Host computer

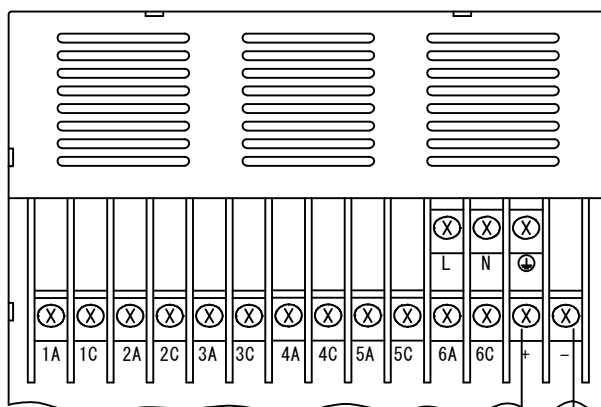
D-sub 9-pin connector

D-sub 25-pin connector



(Fig. 2.1-1)

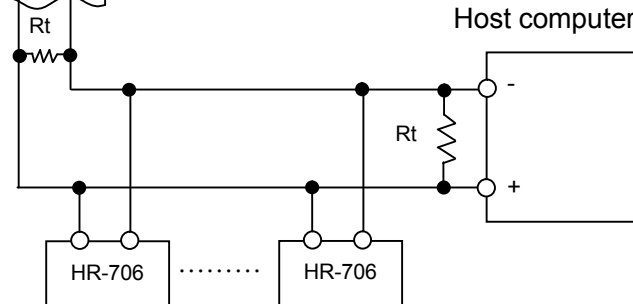
RS-485 Wiring



[Note]

- (1) Be sure to attach terminating resistance (R_t 200 Ω) to a host computer side. Mount the terminating resistance (R_t 200 Ω) for the remotest HR-706 from the host.
- (2) A maximum of 32 units are connectable including a host computer.
- (3) Cable length is a maximum of 1.2km.
- (4) Use the UL20620-SB (M) cable made by HITACHI CABLE LTD. or equivalent.

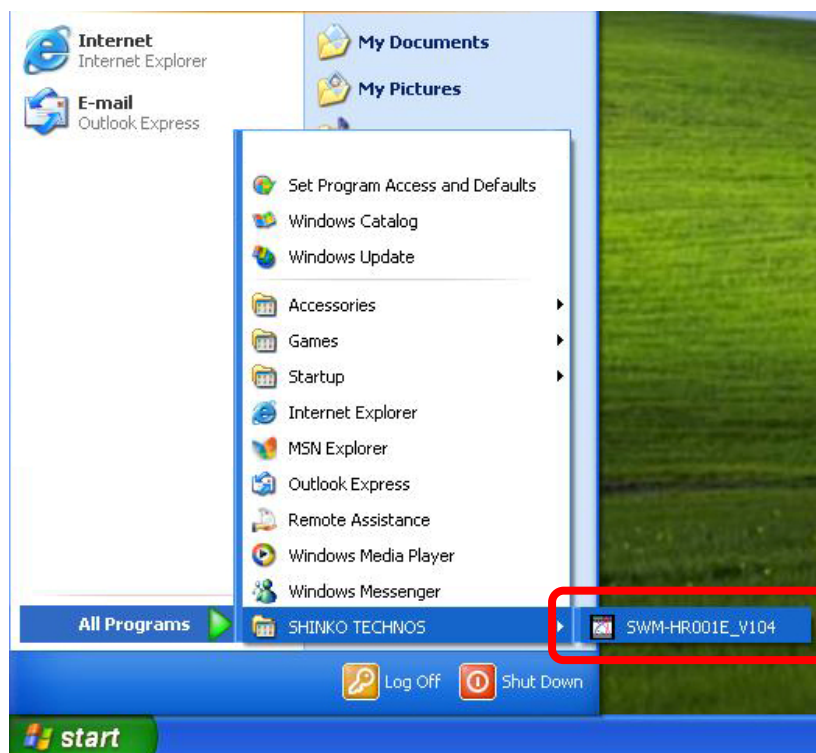
Host computer



(Fig. 2.1-2)

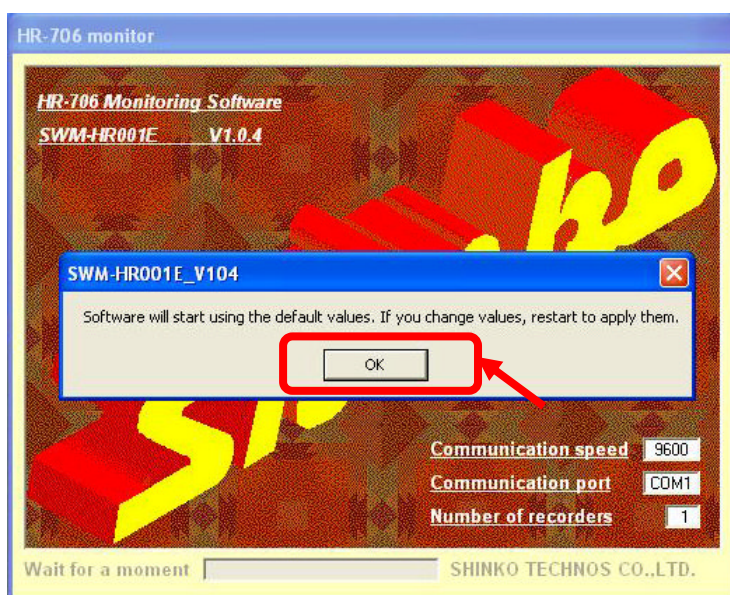
2.2 Starting the SWM-HR001E

- (1) Confirm that the communication cable has been connected to the communication port of the PC.
Select [All Programs] – [SHINKO TECHNOS] – [SWM-HR001E_Vxxx], and click.



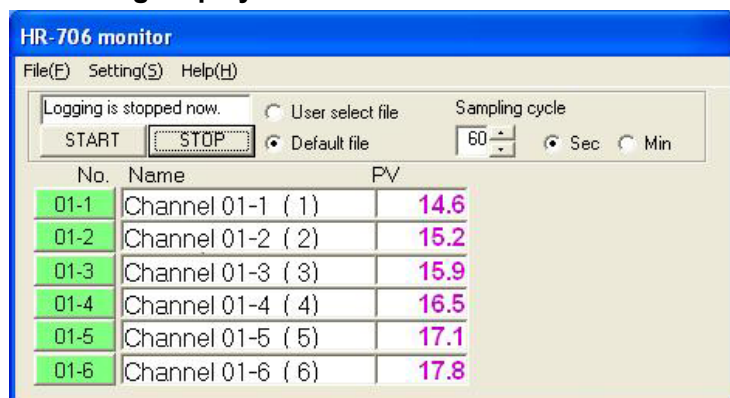
(Fig. 2.2-1)

- (2) When the software starts under the following communication conditions (default value). Click [OK].
Communication speed : 9600bps
Communication port : COM1
Number of recorders : 1



(Fig. 2.2-2)

- (3) The monitoring software starts.
Monitoring display:

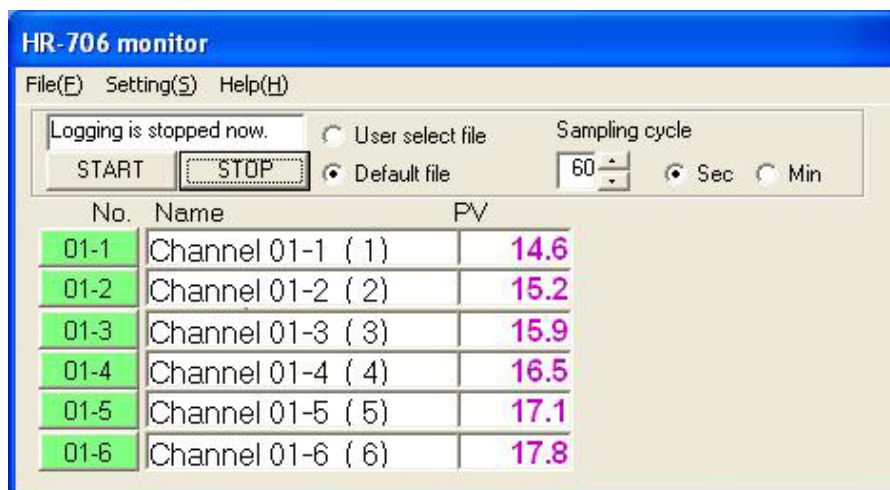


(Fig. 2.2-3)

2.3 Displays and operation of the SWM-HR001E

2.3.1 Monitoring display

Instrument numbers and PV of up to 12 HR-706 units (72 channels) can be monitored.
3 displays are switchable, and a maximum of 31 units (182 channels) can be indicated.



(Fig. 2.3.1-1)

Display explanation

No. : Instrument numbers and channels are identified.

Change colors by clicking the labels.

- Green: Logging is possible.
- Gray : Logging is not carried out.

Name: Channel names are indicated.

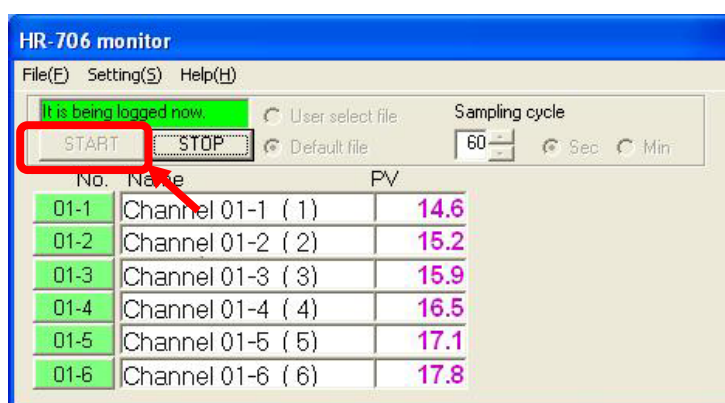
The desired name can be set in the Channel name registration of the Setting(S) menu.

PV : Indicates the measured value.

Operation explanation

[START] button: Starts Logging.

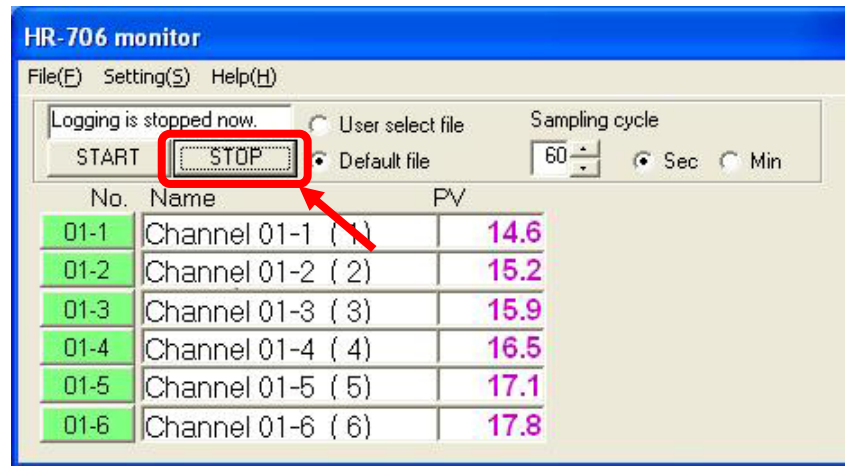
Display when logging is performing:



(Fig. 2.3.1-2)

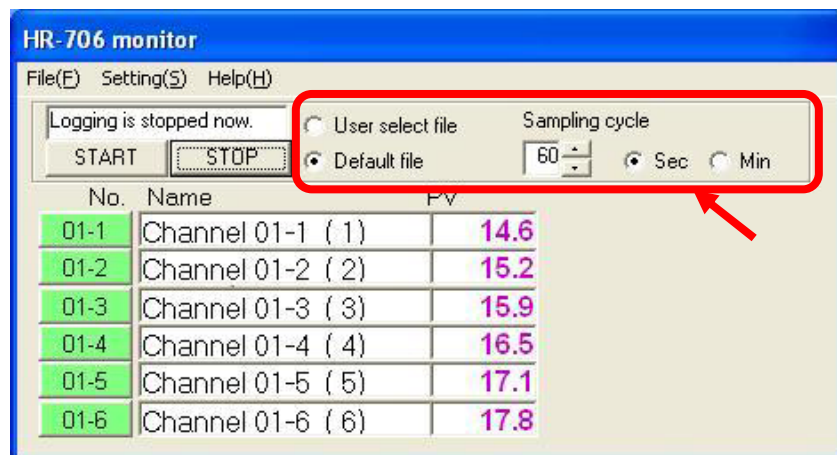
[STOP] button: Stops logging.

Display when logging is stopped:



(Fig. 2.3.1-3)

- ☐ User select file : If ☐ is clicked (☒), while logging is performing, data will be saved in the file set during Logging file name setting in the File(F) menu.
- ☐ Default file : If ☐ is clicked (☒), while logging is performing, data will be saved in a file which is automatically named with the date and time (year, month, day, hour, minute, second.csv).
- Sampling cycle : Sets the logging data save interval.
Use the UP or DOWN button.
- ☐ Sec : If ☐ is clicked (☒), the value set during Sampling cycle setting will be "Second".
- ☐ Min : If ☐ is clicked (☒), the value set during Sampling cycle setting will be "Minute".



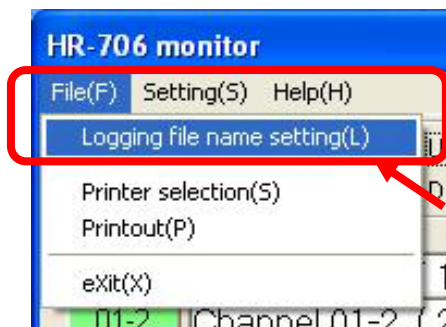
(Fig. 2.3.1-4)

2.4 Menu bar operation

2.4.1 Logging file name setting

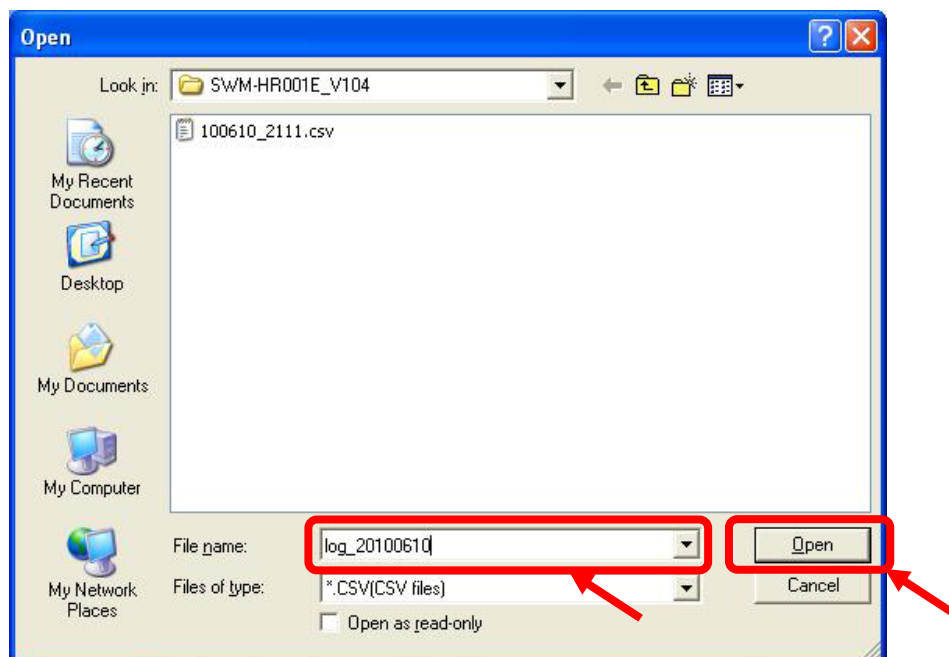
If "User select file" is selected on the monitoring display, the logging file name can be set.

- (1) Select [File(F)] on the menu bar – [Logging file name setting(L)], and click.



(Fig. 2.4.1-1)

- (2) Input a file name, and click [Open].

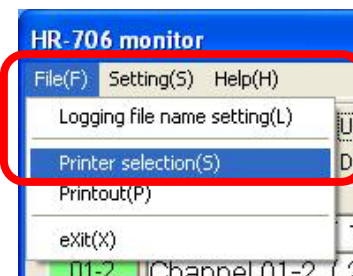


(Fig. 2.4.1-2)

2.4.2 Printer selection

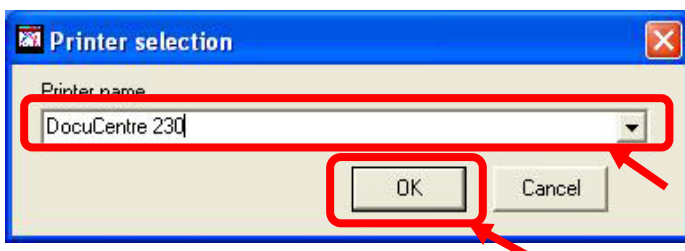
Selects a printer to print contents on the software screen.

- (1) Select [File(F)] – [Printer selection(S)], and click.



(Fig. 2.4.2-1)

- (2) Select a printer name, and click [OK].

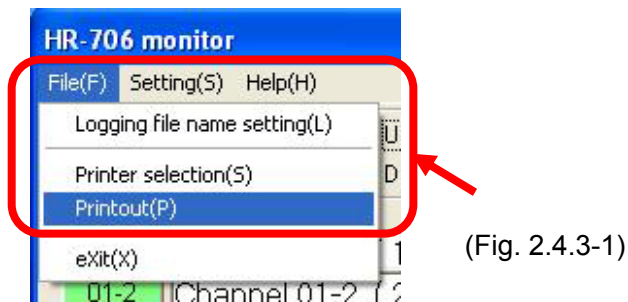


(Fig. 2.4.2-2)

2.4.3 Printing

Prints software window.

- (1) Select [File(F)] on the menu bar – [Printout(P)], and click.

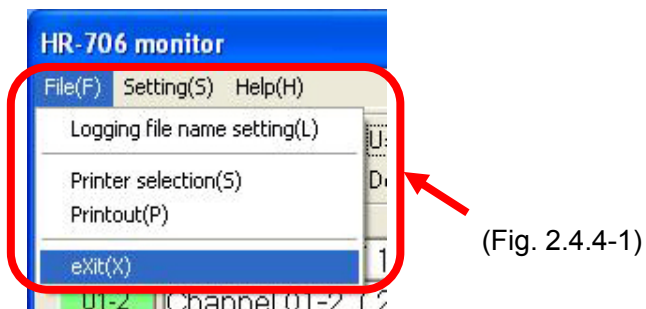


- (2) Contents on the software screen can be printed.

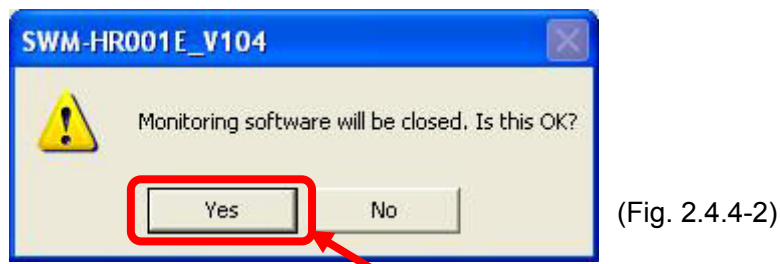
2.4.4 Terminating the SWM-HR001E

Terminates the monitoring software as follows.

- (1) Select [File(F)] – [Exit(X)], and click.



- (2) Termination confirmation screen appears.
Clicking [Yes] terminates the screen, and clicking [No] cancels termination.

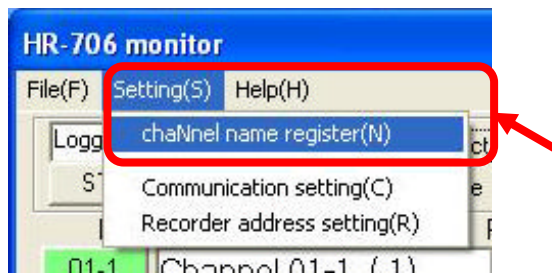


2.4.5 Channel name registration

Registers the channel name indicated on the screen.

The registered channel name is indicated on the monitoring screen.

- (1) Select [Setting(S)] – [Channel name register(N)], and click.

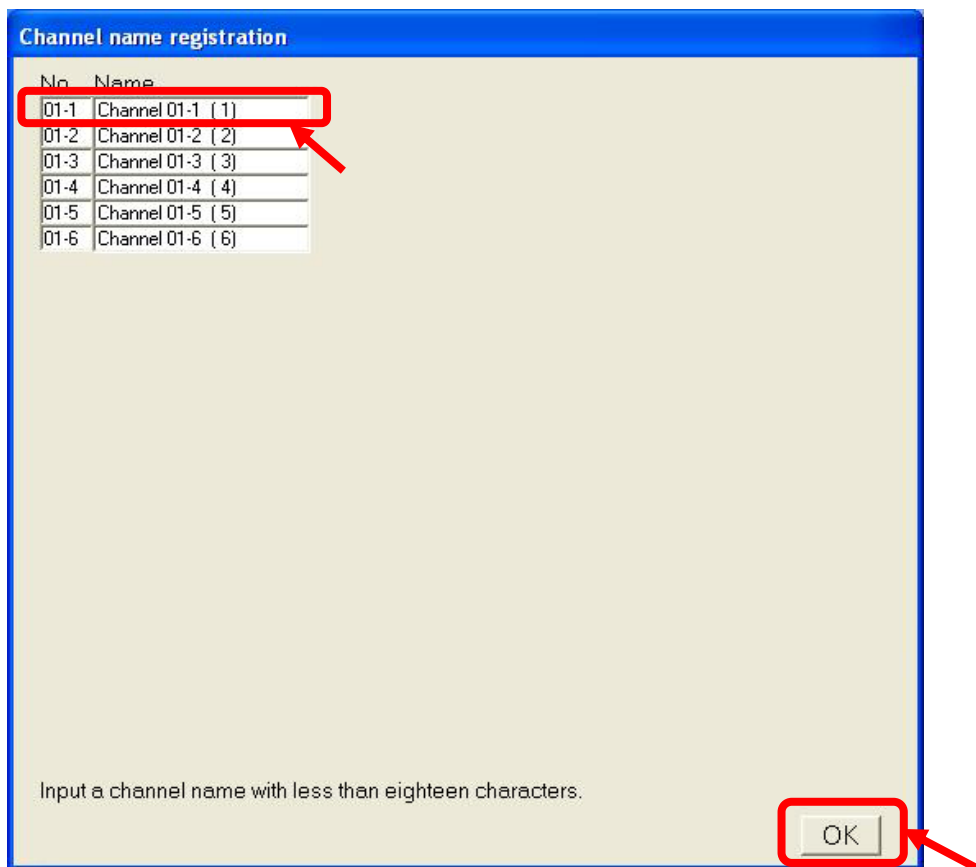


(Fig. 2.4.5-1)

- (2) Channel name registration display appears.

Enter a channel name, and click [OK].

Up to 18 characters are available for the name.



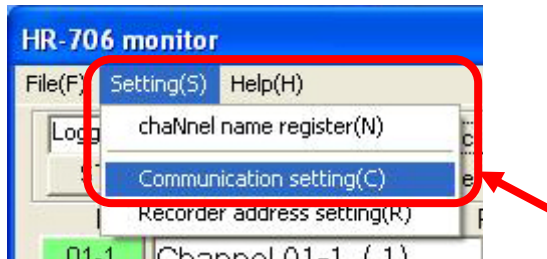
(Fig. 2.4.5-2)

2.4.6 Communication setting

Sets communication conditions and the number of connected units when communicating with the HR-706.

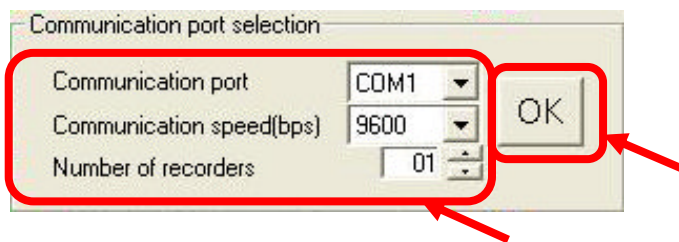
If communication settings have been changed, restart the Monitoring software.

- (1) Select [Setting(S)] – [Communication setting(C)], and click.



(Fig. 2.4.6-1)

- (2) Communication port selection display appears.
Select the following items and click [OK]:
Communication port, Communication speed, Number of recorders



(Fig. 2.4.6-2)

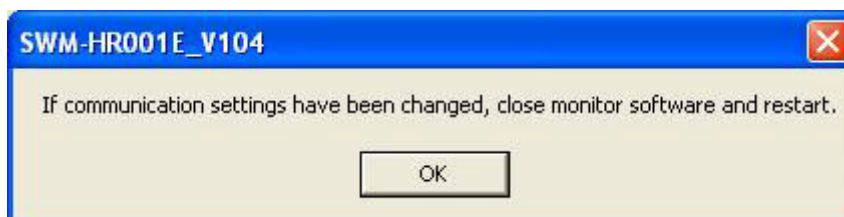
Operation explanation

Communication port : COM1 to COM8 (Default: COM1)
Communication speed : 9600, 4800, 2400bps (Default: 9600bps)
Data length : 7
Parity : Even
Stop bit : 1

Number of recorders : 1 to 31 (Default: 1)

[OK] : Registers communication conditions, and closes the window.

If communication conditions are changed, the monitoring software should be restarted.
Restart the software by clicking [OK].

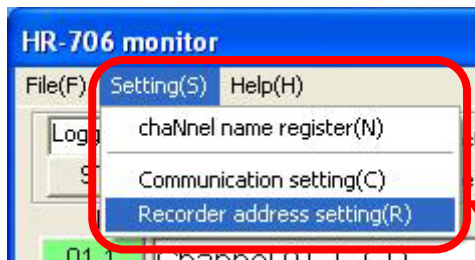


(Fig. 2.4.6-3)

2.4.7 Instrument number setting

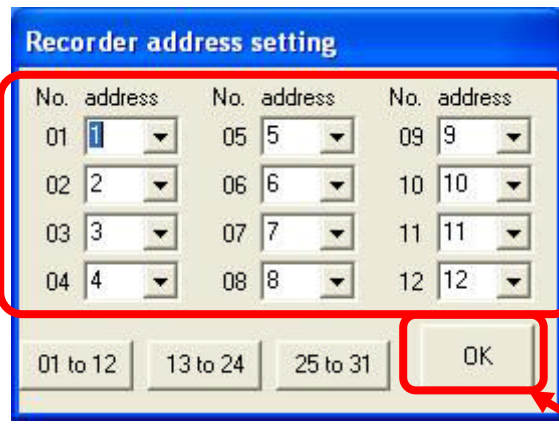
Sets instrument numbers (addresses) of the HR-706.

- (1) Select [Setting(S)] - [Recorder address setting(R)], and click.



(Fig. 2.4.7-1)

- (2) The following display appears.



(Fig. 2.4.7-2)

Operation explanation

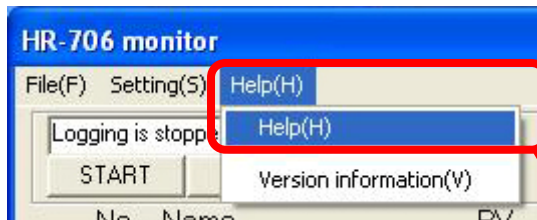
01 to 31 : Set instrument numbers which were set for the HR-706. Setting range: 1 to 32

[OK] : Registers the set instrument numbers, and closes the window.

2.4.8 Help display

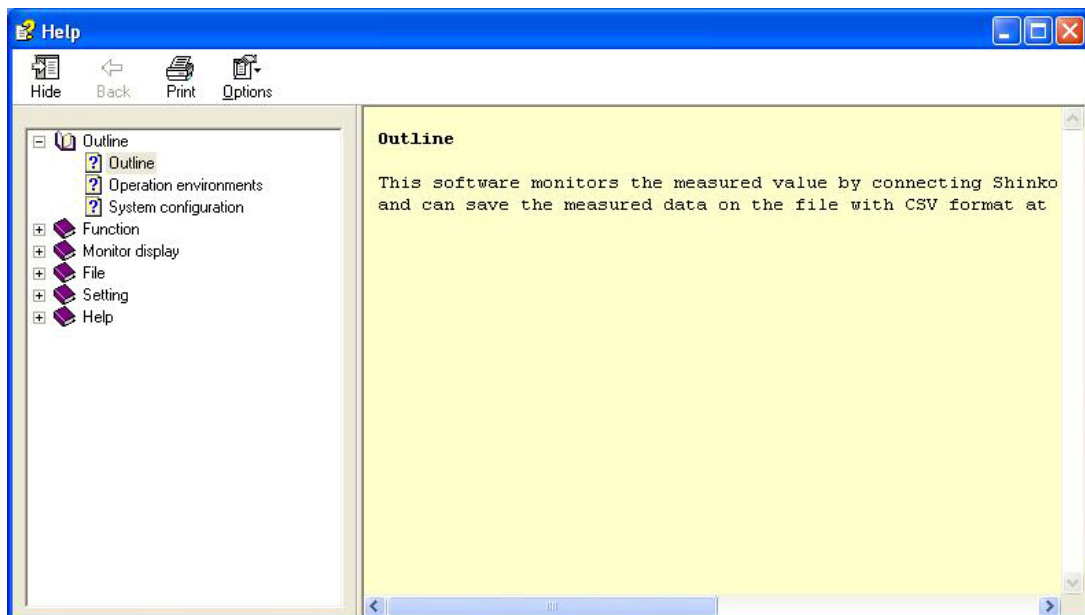
Each screen and operation method are explained.

- (1) Select [Help(H)] - [Help(H)], and click.



(Fig. 2.4.8-1)

- (2) Help display appears.

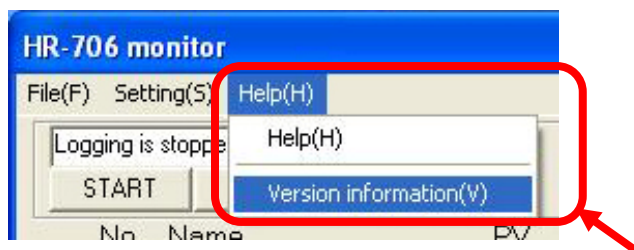


(Fig. 2.4.8-2)

2.4.9 Version information display

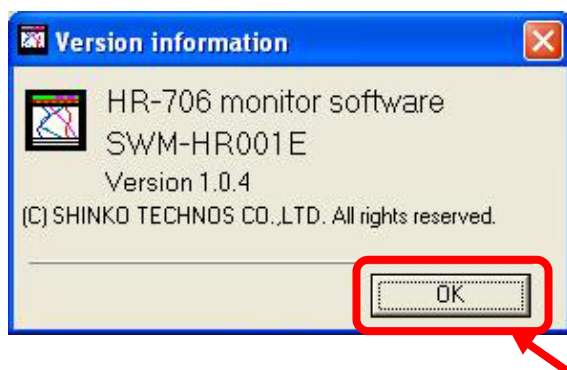
Version information on the monitoring software is indicated.

- (1) Select [Help(H)] – [Version information(V)], and click.



(Fig. 2.4.9-1)

- (2) Version information display appears.



(Fig. 2.4.9-2)

Operation explanation

[OK]: Closes Version information window.

***** Inquiry *****

For any inquiries about this software, please contact the vendor where you purchased the software or our agency. Please let us know the details of malfunction, if any, and the operating conditions.

SHINKO TECHNOS CO.,LTD. OVERSEAS DIVISION

Reg. Office : 2-5-1, Senbahigashi, Minoo, Osaka, Japan

URL : <http://www.shinko-technos.co.jp>

E-mail : overseas@shinko-technos.co.jp

Tel : +81-72-727-6100

Fax: +81-72-727-7006